

NOTES (UNLESS OTHERWISE SPECIFIED):

- Applicable standards:
ASME B46.1-2019, ASME Y14.5-2018,
ASME Y14.36-2018, ASME Y14.41-2019.
- Official information assets for this product are listed in the Official Information Assets table.
- Specification TDP-UC-01_A defines officially approved use cases for official information and information assets.
- Explicit dimensions are the official definition of the product geometry they define.

Model geometry is the official definition of all other product geometry.
- Model geometry represents basic dimensions except for the following:
 - Explicitly dimensioned geometry
 - Geometry defined as reference
- Modeling specification TDP-M-01_A defines modeling practices, dataset structure, data objects, and schema(s) for this dataset.
- Global tolerances apply per Global Tolerance Block.
- Finished item must conform to workmanship specification TDP-WK-01_A and operational specification TDP-OP-01_A.
- Length units: Inches

GLOBAL TOLERANCE BLOCK	
Global Datum Reference Frame	N/A
Product State: Unrestrained.	
Tolerances and conformance criteria apply per IP-150-0001-010D_A.	

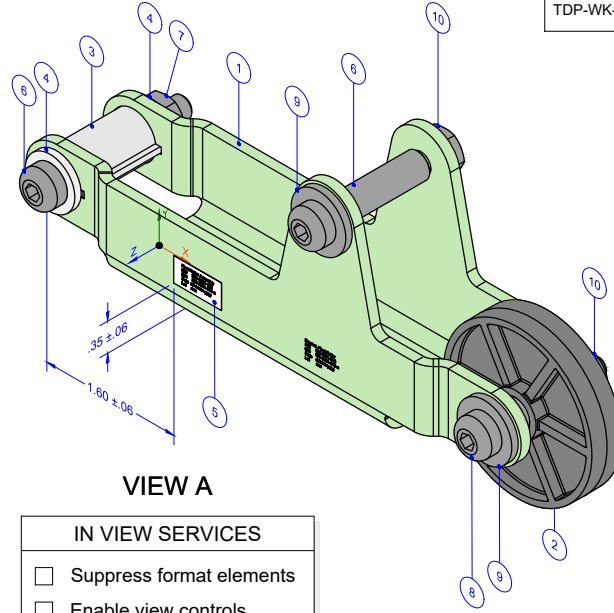
REVISION HISTORY				
ZONE	REV	DESCRIPTION	DATE	APPROVED
	A	Production Release	04JUL2023	-
-	-	-	-	-
-	-	-	-	-

OFFICIAL INFORMATION ASSETS			
ITEM	ASSET TYPE	ASSET NUMBER	ASSET DESCRIPTION
1	Model	150-0001-010D-5.2	Pivot Roller Assembly Model
-	-	-	-
-	-	-	-

SPECIFICATIONS	
TDP-SCR-01_A	Security, copyright, and rights in use
TDP-CC-01_A	Product definition dataset classifications
TDP-M-01_A	Modeling modeling practices, data objects, dataset structure and schema(s)
TDP-MK-01_A	Product marking and identification
TDP-OP-01_A	Finished item operational requirements and conformance
TDP-UC-01_A	Officially approved use cases for official information and information assets
TDP-WK-01_A	Finished item workmanship requirements and conformance

APPROVALS:		DATE:
DRAWN: BR FISCHER		04JUL2023
CHECKED: BR FISCHER		04JUL2023
ENGINEER: BR FISCHER		04JUL2023
MODEL NO: 150-0001-010D-5.2	CAD KaijuCAD	
PART NO: 150-0001-010D	REV: A	
TITLE: Pivot Roller Assembly		
DATASET CLASSIFICATION CODE: DCC 5		
DATASET USE CODE: DUC 5.2		
WORK MODE: MBE		
STRUCTURE: Minimally-Dimensioned Model		

General Metadata 1 of 2



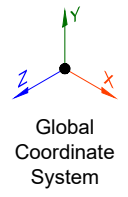
VIEW A

IN VIEW SERVICES	
<input type="checkbox"/>	Suppress format elements
<input type="checkbox"/>	Enable view controls
<input type="checkbox"/>	Full screen
<input type="checkbox"/>	Suppress PMI
<input type="checkbox"/>	Markup
<input type="checkbox"/>	Save view
<input type="checkbox"/>	Recall / Export view
<input type="checkbox"/>	Display bounding box
<input type="checkbox"/>	Lock view

Bounding Box
x = (6.768)
y = (2.693)
z = (2.027)

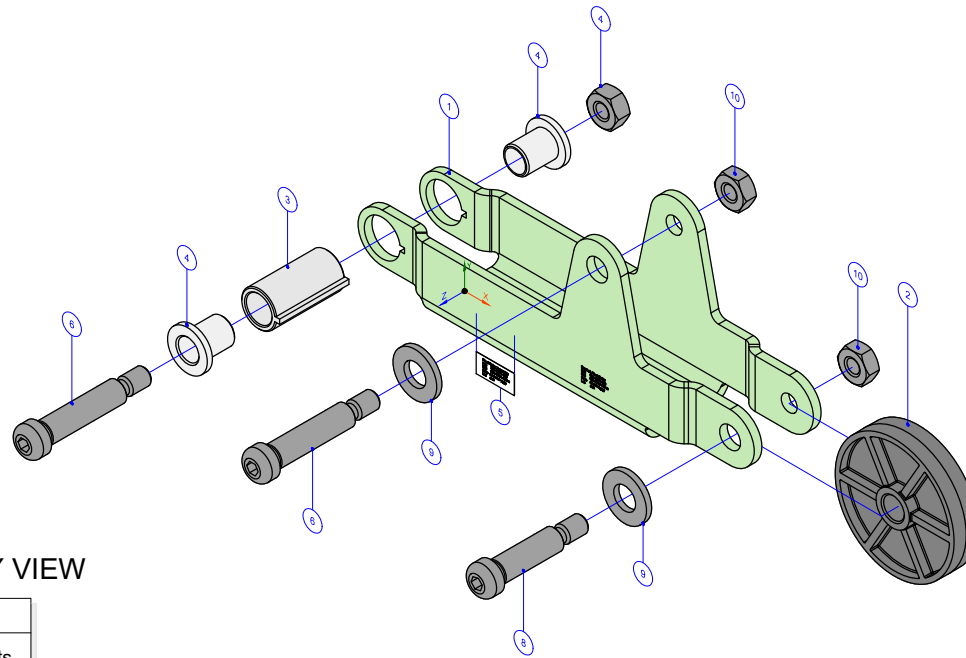
INFORMATION SERVICES	
<input type="checkbox"/>	Display security, export control, trademark, patent, proprietary, and rights in use information
<input type="checkbox"/>	Display critical safety and handling information
<input type="checkbox"/>	Display information asset (IA) map, legend, modeling, schema, product, and IA information
<input type="checkbox"/>	Display KPC / KPI and critical item information
<input type="checkbox"/>	Display other special notations and information
<input type="checkbox"/>	Display global datum features
<input type="checkbox"/>	Display global setup and interface information
<input type="checkbox"/>	Display surface preparation and requirements
<input type="checkbox"/>	Display assembly information
<input type="checkbox"/>	Display bulk material application information
<input type="checkbox"/>	Display work instruction IDs and links
<input type="checkbox"/>	Display service and maintenance clearance
<input type="checkbox"/>	Display feature-level information
<input type="checkbox"/>	Markup / Save full format view
<input type="checkbox"/>	Recall / Export saved full format view
<input type="checkbox"/>	Display last revision information
<input type="checkbox"/>	Display data and dataset validation scoring

PARTS LIST						
ITEM	QTY	PART NUMBER	DESCRIPTION	Visible	Transp	Isolate
1	1	150-0001-010	Bracket, Pivot Roller	<input type="checkbox"/>	<input type="checkbox"/>	<input type="checkbox"/>
2	1	150-0001-012	Wheel, Pivot Roller	<input type="checkbox"/>	<input type="checkbox"/>	<input type="checkbox"/>
3	1	150-0001-013	Bushing, Keyed, Pivot Roller	<input type="checkbox"/>	<input type="checkbox"/>	<input type="checkbox"/>
4	2	150-0001-011	Bushing, Pivot Roller	<input type="checkbox"/>	<input type="checkbox"/>	<input type="checkbox"/>
5	1	150-0001-014	Decal, Pivot Roller Assembly	<input type="checkbox"/>	<input type="checkbox"/>	<input type="checkbox"/>
6	2	100-312-125	Socket Head Shoulder Screw 0.312 x 1.25 x .250-20 UNC (ANSI B18.3)	<input type="checkbox"/>	<input type="checkbox"/>	<input type="checkbox"/>
7	1	105-250-20-1	Hex Nut 250-20 UNC (ANSI B18.2.2)	<input type="checkbox"/>	<input type="checkbox"/>	<input type="checkbox"/>
8	1	100-312-100	Socket Head Shoulder Screw 0.312 x 1.00 x .250-20 UNC (ANSI B18.3)	<input type="checkbox"/>	<input type="checkbox"/>	<input type="checkbox"/>
9	2	108-312-01-1	Flat Washer .3125 (ASTM F436)	<input type="checkbox"/>	<input type="checkbox"/>	<input type="checkbox"/>
10	2	105-250-20-2	Hex Nut HMNSI 250-20 UNC (ANSI B18.2.2)	<input type="checkbox"/>	<input type="checkbox"/>	<input type="checkbox"/>



APPROVALS:		DATE:
DRAWN:	BR FISCHER	04JUL2023
CHECKED:	BR FISCHER	04JUL2023
ENGINEER:	BR FISCHER	04JUL2023
MODEL NO:	150-0001-010D-5.2	CAD KaijuCAD
PART NO:	150-0001-010D	REV: A
TITLE: Pivot Roller Assembly		
DATASET CLASSIFICATION CODE:		DCC 5
DATASET USE CODE:		DUC 5.2
WORK MODE:		MBE
STRUCTURE:		Minimally-Dimensioned Model

General Metadata 2 of 2



EXPLODED ASSEMBLY VIEW

IN VIEW SERVICES	
<input type="checkbox"/>	Suppress format elements
<input type="checkbox"/>	Enable view controls
<input type="checkbox"/>	Full screen
<input type="checkbox"/>	Suppress PMI
<input type="checkbox"/>	Markup
<input type="checkbox"/>	Save view
<input type="checkbox"/>	Recall / Export view
<input type="checkbox"/>	Lock view
<input type="checkbox"/>	Animate assembly ◀ ▶

INFORMATION SERVICES	
<input type="checkbox"/>	Display security, export control, trademark, patent, proprietary, and rights in use information
<input type="checkbox"/>	Display critical safety and handling information
<input type="checkbox"/>	Display information asset (IA) map, legend, modeling, schema, product, and IA information
<input type="checkbox"/>	Display KPC / KPI and critical item information
<input type="checkbox"/>	Display other special notations and information
<input type="checkbox"/>	Display global datum features
<input type="checkbox"/>	Display global setup and interface information
<input type="checkbox"/>	Display surface preparation and requirements
<input type="checkbox"/>	Display assembly information
<input type="checkbox"/>	Display bulk material application information
<input type="checkbox"/>	Display work instruction IDs and links
<input type="checkbox"/>	Display service and maintenance clearance
<input type="checkbox"/>	Display feature-level information
<input type="checkbox"/>	Markup / Save full format view
<input type="checkbox"/>	Recall / Export saved full format view
<input type="checkbox"/>	Display last revision information
<input type="checkbox"/>	Display data and dataset validation scoring

REVISION HISTORY				
ZONE	REV	DESCRIPTION	DATE	APPROVED
	A	Production Release	04JUL2023	-
-	-	-	-	-
-	-	-	-	-



Bounding Box
x = (6.768)
y = (2.693)
z = (2.027)

PARTS LIST						
ITEM	QTY	PART NUMBER	DESCRIPTION	Visible	Transp	Isolate
1	1	150-0001-010	Bracket, Pivot Roller	<input type="checkbox"/>	<input type="checkbox"/>	<input type="checkbox"/>
2	1	150-0001-012	Wheel, Pivot Roller	<input type="checkbox"/>	<input type="checkbox"/>	<input type="checkbox"/>
3	1	150-0001-013	Bushing, Keyed, Pivot Roller	<input type="checkbox"/>	<input type="checkbox"/>	<input type="checkbox"/>
4	2	150-0001-011	Bushing, Pivot Roller	<input type="checkbox"/>	<input type="checkbox"/>	<input type="checkbox"/>
5	1	150-0001-014	Decal, Pivot Roller Assembly	<input type="checkbox"/>	<input type="checkbox"/>	<input type="checkbox"/>
6	2	100-312-125	Socket Head Shoulder Screw 0.312 x 1.25 x .250-20 UNC (ANSI B18.3)	<input type="checkbox"/>	<input type="checkbox"/>	<input type="checkbox"/>
7	1	105-250-20-1	Hex Nut 250-20 UNC (ANSI B18.2.2)	<input type="checkbox"/>	<input type="checkbox"/>	<input type="checkbox"/>
8	1	100-312-100	Socket Head Shoulder Screw 0.312 x 1.00 x .250-20 UNC (ANSI B18.3)	<input type="checkbox"/>	<input type="checkbox"/>	<input type="checkbox"/>
9	2	108-312-01-1	Flat Washer .3125 (ASTM F436)	<input type="checkbox"/>	<input type="checkbox"/>	<input type="checkbox"/>
10	2	105-250-20-2	Hex Nut HMNSI 250-20 UNC (ANSI B18.2.2)	<input type="checkbox"/>	<input type="checkbox"/>	<input type="checkbox"/>